

SOLUTION BRIEF

GEP GREEN

Revolutionizing End-to-End Supply Chains & Procurement
for a Sustainable Future



Highlights

- AI-powered supply chain ESG management solution
- Seamless integration into procurement and supply chain operations
- End-to-end ESG visibility through a unified platform
- Comprehensive scope 3 reporting
- Actionable strategy development and cost-benefit analyses
- Supplier ESG maturity assessment and collaboration
- ESG data integration, ingestion and analysis
- Real-time reporting and progress tracking

Businesses are remaking their entire value chains, investing in new plants and capabilities and creating multiple sourcing options to bring goods to markets more efficiently, increase resilience, mitigate disruption and reduce financial risk. All while working to reduce supply chain emissions, which account for up to 90% of a company's total environmental impact.¹

GEP GREEN is an AI-powered solution designed for enterprises to enhance their Environmental, Social, and Governance (ESG) performance, aligned with their corporate vision and strategic objectives. It empowers enterprises to transition from ambitious sustainability goals to real, tangible results. GEP GREEN enables a nuanced, data-driven approach to sustainability so that enterprises can set precise ESG targets, manage them efficiently, increase collaboration and report on their progress with accuracy.

Improve ESG Performance with End-to-End Visibility and Control

GEP GREEN unlocks ESG performance with a holistic view and data-driven insights across your entire supply chain and suppliers, empowering users with AI-based intuitive intake management and seamless orchestration across procurement and supply chain processes that promotes real-time action and continuous improvement. It brings comprehensive ESG data to life, guiding proactive decisions and measurable sustainability progress through recommended category strategy or supplier partnership enhancements.



¹ "Scope 3 Frequently Asked Questions," Greenhouse Gas Protocol, June 2022 | https://ghgprotocol.org/sites/default/files/standards_supporting/Scope%203%20Detailed%20FAQ.pdf

Build Sustainable Business Operations with an Integrated and Scalable Platform

GEP GREEN integrates seamlessly with GEP's procurement and supply chain solutions as well as with external data sources, leading ERPs and partners such as CDP, EcoVadis, Tealbook and more.

This ensures data quality, consistency and accuracy, enabling enterprises to leverage the full potential of GEP's unified and comprehensive supply chain platform to achieve their ESG goals and create a positive impact on the world.

Revolutionize ESG Reporting and Management: Harness the Power of AI and Cloud-Native Software

GEP GREEN leverages GEP's cloud-native, AI-powered low-code application platform, GEP QUANTUM, to provide advanced analytics, machine learning, big data, report creation and automation capabilities that enhance the efficiency, effectiveness and agility of ESG management.

GEP GREEN helps define strategic goals and KPIs, supported by real-time dashboards and progress tracking for proactive strategy planning and management. With GEP GREEN, you can transform ESG goals into strategic plans with AI-powered analytics and visualization tools to assess emissions. You can also identify focus areas and devise targeted emission reduction strategies with AI-driven recommendations.

Unlock Sustainable Success with Best-in-Class ESG Expertise and Support

GEP GREEN is backed by GEP's deep knowledge and experience in helping enterprises operationalize ESG goals and achieve real, sustainable results. GEP provides end-to-end ESG services and support, from strategy development and execution to reporting and compliance, continuous improvement and innovation.

Overview of Core Features & Capabilities

With the following proven, advanced core features and capabilities, GEP GREEN offers a comprehensive ESG framework that enables enterprises to set accurate targets as well as efficiently manage and report on their ESG performance to transform their supply chain and procurement operations into a source of competitive advantage, value creation and positive impact.

GEP GREEN consists of three modules that drive meaningful progress toward ESG goals: Measure, Action and Report. Each module’s functionalities and tools drive an organization’s ESG journey.



Measure: Aggregate and analyze data to understand, track and visualize your ESG footprint across the supply chain, using data from internal systems and external sources.



Action: Mobilize your ESG ambition and develop a strategic road map for achieving ESG targets.



Report: Create transparency for your internal and external compliance objectives by supporting globally accepted standards and reporting organizations, such as CDP, SBTi, TCFD, and GRI, with the ability to configure and adopt additional frameworks.

Core Functions					
Data Integration & Management	Baseline Creation & Goal Setting	Strategy & Road Map Development	Category Emission Management	Supplier Engagement & Collaboration	External Report Creation

	Features	
Measure	End-to-End ESG Visibility and Tracking	Gain a complete overview of ESG performance across the entire supply chain. Track, control and enhance ESG efforts in real time, using data-driven insights and recommendations.
Action	Power of AI and Domain Expertise	Leverage the power of AI with GEP’s extensive procurement and supply chain expertise for effective scope 3 emissions calculations and diversity profiling. Develop emission reduction strategies and enhancements to supplier diversity sourcing with AI-driven recommendations and conduct cost-benefit analysis of a specific strategy.
	Category-Specific Emission Management Suite	Identify and prioritize high-emission categories as well as develop and implement customized emission reduction strategies.
	Supplier ESG Maturity Assessment and Collaboration	Assess and categorize suppliers based on their ESG maturity and performance and develop more effective supplier relationship management programs, encouraging collaboration to align objectives and drive ESG progress. Collaborate with suppliers directly on the platform through discussions, surveys or questionnaires. This allows for traceability and a clear audit trail, for progress monitoring and for effective tracking of supplier responses and POCs for surveys.
Report	Comprehensive ESG Data Management and Analysis	Leverage powerful, flexible tools for managing ESG data, enabling businesses to gather, verify and analyze ESG data from multiple internal and external sources.
	Real-Time, Automated ESG Reports	Streamline the ESG reporting process with AI-powered real-time, automated reports. Easily create and validate reports in both internal and external formats, aligned to global standards and reporting organizations such as CDP, SBTi, GRI and TCFD.

Intake Management and Integration with S2P

Through one streamlined, simplified user experience, empower every organizational persona to address their ESG requests with intuitive, AI-based intake management. Synchronized and automated workflows allow for seamless orchestration across the entire S2P process, driving execution and action. Easily track the status of each request across the measure/action/report life cycle. The seamless integration with key transaction data in the S2P process facilitates real-time ESG reporting and decision-making.

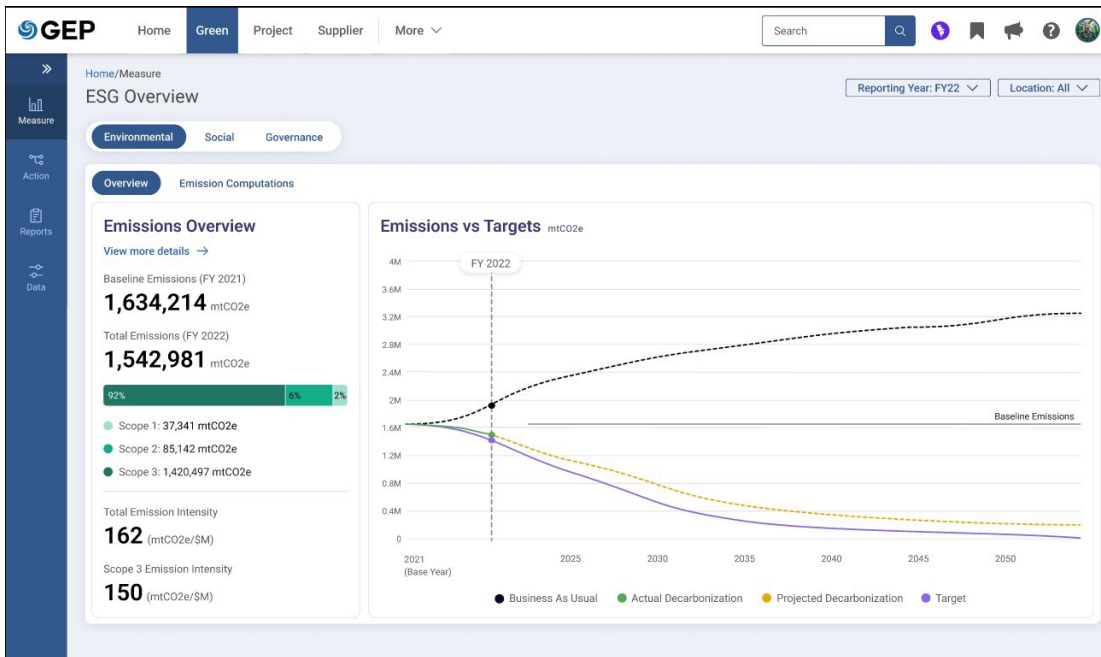
Use Case Examples of ESG Engagements

- **Revolutionizing GHG Accounting: How 4-Week Sprint Slashed European Client's Scope 3 Emission Under-Reporting by Over 50%**

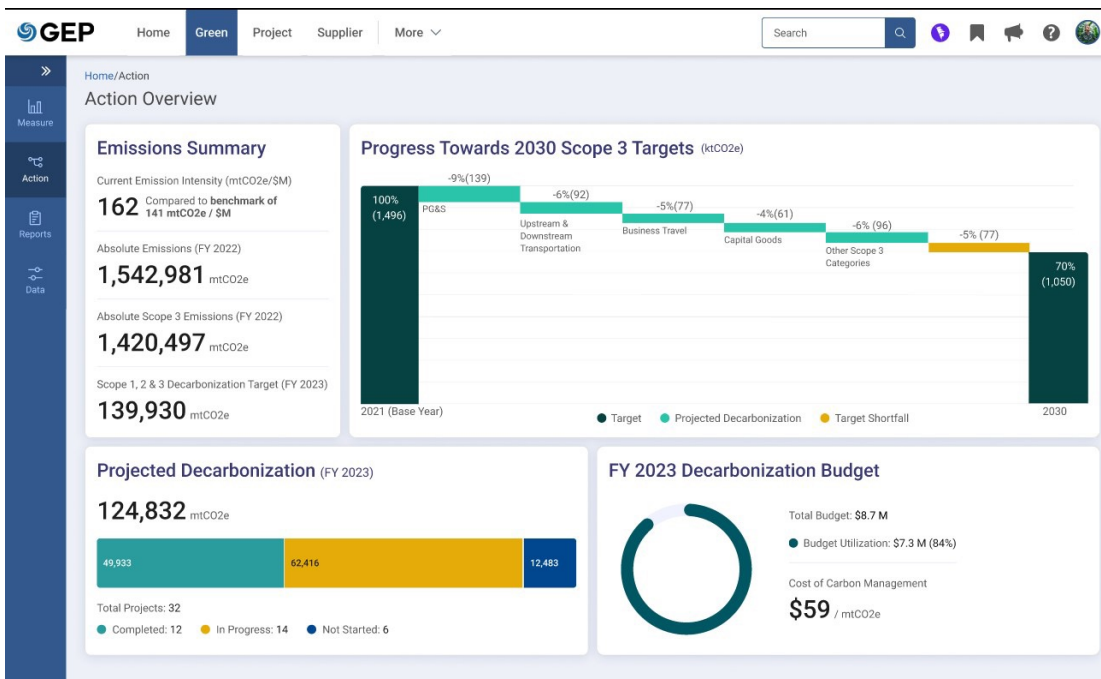
An EU-based client wanted to reduce its GHG emissions and had been progressing to accurately map them, with their focus on some categories of scope 3 emissions, which had been under-reported by 50%. With GEP software, the client had access to an interactive, insights-driven and tailor-made scope 3 emissions dashboard and was able to establish a robust and complete baseline using both spend-based and supplier-specific approaches, with the latter representing more than 60% of the spend.

- **An Intense 6-Week Full Scope 3 Baseline Activity Helped a European Manufacturer Address Critical Emission Hotspots With Decarbonization Strategies**

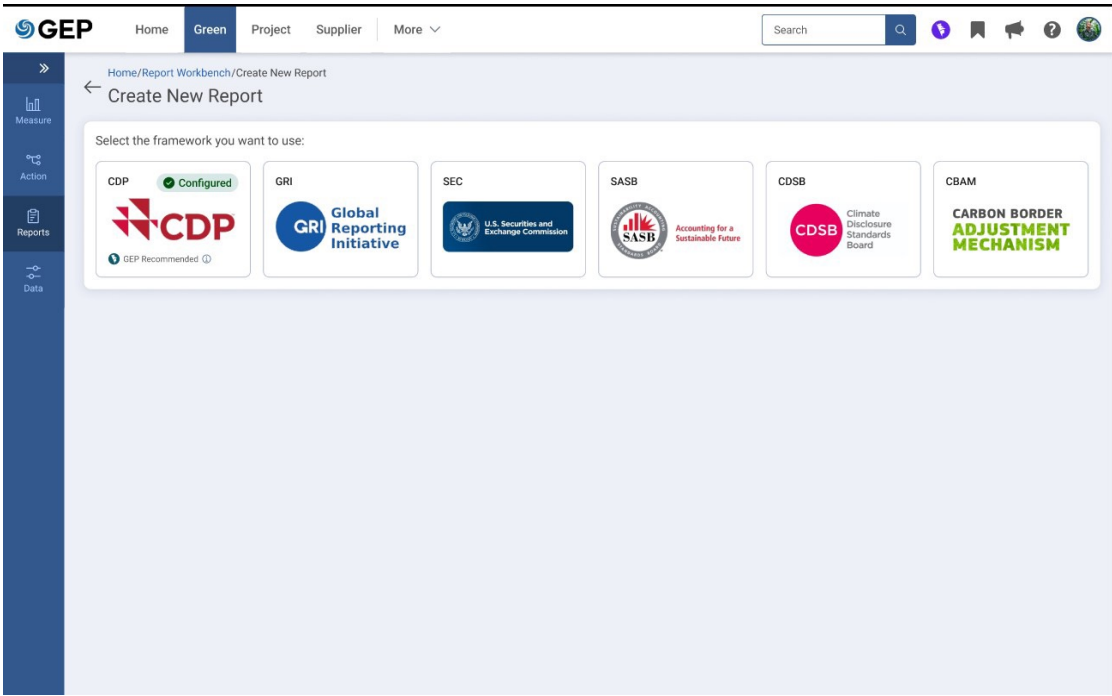
A client based in the EU sought support with establishing the full scope 3 emissions baseline and building an interactive emissions dashboard. The GEP team utilized a spend-based, supplier-specific and distance-based approach while the supplier-based covered more than 60% of the spend, leading to a more accurate baseline. GEP Software provided an interactive, analytical and tailor-made scope 3 emissions dashboard that allowed for different views of emissions and helped identify hotspots. The solution provided data-driven decarbonization strategies to address the critical hotspot categories, reduce the carbon footprint and support the company's emission target goals.



Measure module view



Action module view



Report module view



GEP® delivers AI-powered procurement and supply chain solutions that help global enterprises become more agile and resilient, operate more efficiently and effectively, gain competitive advantage, boost profitability and increase shareholder value.

Fresh thinking, innovative products, unrivaled domain expertise, smart, passionate people — this is how GEP SOFTWARE™, GEP STRATEGY™ and GEP MANAGED SERVICES™ together deliver procurement and supply chain solutions of unprecedented scale, power and effectiveness. Our customers are the world's best companies, including more than 550 Fortune 500 and Global 2000 industry leaders who rely on GEP to meet ambitious strategic, financial and operational goals.

A leader in multiple Gartner Magic Quadrants, GEP's cloud-native software and digital business platforms consistently win awards and recognition from industry analysts, research firms and media outlets, including Gartner, Forrester, IDC, ISG, and Spend Matters.

GEP is also regularly ranked a top procurement and supply chain consulting and strategy firm, and a leading managed services provider by ALM, Everest Group, NelsonHall, IDC, ISG and HFS, among others. Headquartered in Clark, New Jersey, GEP has offices and operations centers across Europe, Asia, Africa and the Americas. To learn more, visit www.gep.com.

GEP SMART®

GEP SMART is an AI-powered, cloud-native software for direct and indirect procurement that offers comprehensive source-to-pay functionality in one user-friendly platform, inclusive of spend analysis, sourcing, contract management, supplier management, procure-to-pay, savings project management and savings tracking, invoicing and other related functionalities.

GEP NEXXE®

GEP NEXXE is a unified and comprehensive supply chain platform that provides end-to-end planning, visibility, execution and collaboration capabilities for today's complex, global supply chains.

Built on a foundation of big data, artificial intelligence and machine learning, GEP NEXXE is next-generation software that helps enterprises make supply chain a competitive advantage.

100 Walnut Avenue, Clark, NJ 07066 | P 732.382.6565 | info@gep.com | www.gep.com

Clark, NJ | Chicago | Atlanta | Toronto | Mexico City | San José, Costa Rica | São Paulo | Dublin | London
Amsterdam | Frankfurt | Prague | Cluj-Napoca, Romania | Pretoria | Mumbai | Hyderabad | Coimbatore
Kuala Lumpur | Singapore | Surabaya, Indonesia | Shanghai | Dalian | Tokyo | Sydney

Copyright © 2024 GEP. All rights reserved.